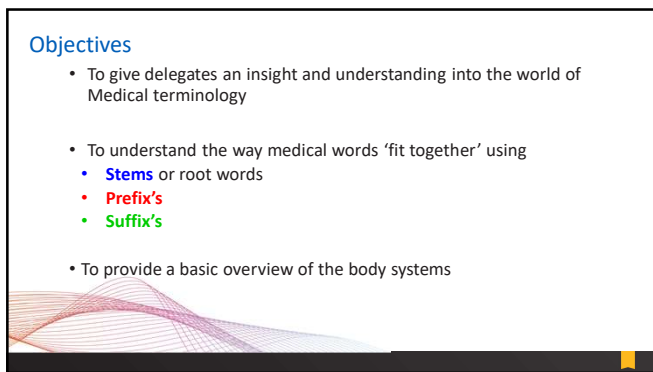
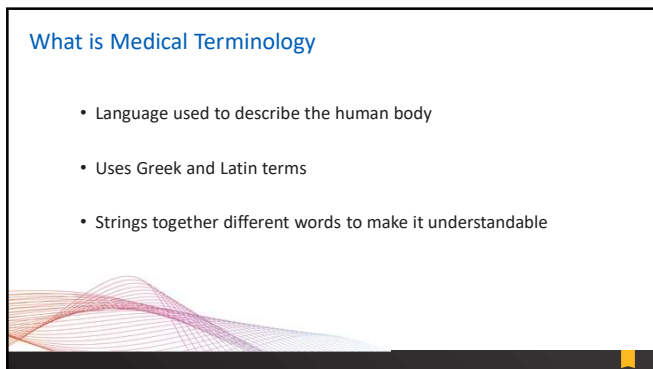


1



2



3

Understanding Word Parts

- Three basic parts:
 - Stem or root word
 - Suffix - end
 - Prefix - beginning

4

Example of Prefixes, Stems and Suffixes within a complete 'word'

WORD	PREFIX	STEM	SUFFIX
Electro/cardio/graph	Electro	cardio	Graph
Hyper/thyroid/ism	Hyper	thyroid	ism
Hypo/glycaem/ic	Hypo	glycaem	ic

5

Understanding Word Parts STEM

- Expresses the basic meaning of the term
- ALL medical terms have a STEM
 - Cardi - Heart
 - Derm - Skin
 - Gastr - Stomach
 - Gluc - Sugar
 - Leuk - White

6

Understanding Word Parts

STEM

- Possible to have more than one stem word eg:

Osteoarthritis

- Joined together by a vowel, in this case 'o'

STEM	Joining Letter	STEM	SUFFIX
OSTE	O	ARTHRO	ITIS
Bone		Joint	Inflammation of

7

Understanding Word Parts

SUFFIX

- Always attaches to the end of the STEM word
- ALL medical terms have a suffix
- Describes what is happening to the STEM word
- Only ever one suffix at the end of a word.

8

Understanding Word Parts

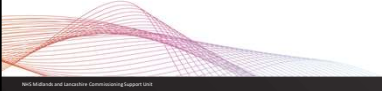
SUFFIX

- Meaning of a suffix always remains the same
 - Relating to -ac
 - Condition of -osis
 - Inflammation of -itis
 - Hole/opening -ostomy
 - Sample of -opsy
 - Study of -ology

9

Understanding Word Parts
SUFFIX

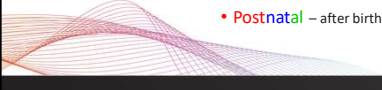
- The 5 -rrhs....
 - rrhoea
 - rrhage
 - rrhagia
 - rrhexis
 - rrhaphy



10

Understanding Word Parts
PREFIX

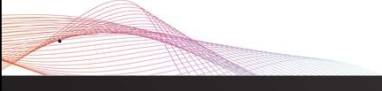
- Always attached to the beginning of the STEM word
- Not all medical terms have a prefix
 - Tracheotomy – incision into the trachea
- Changes the meaning of the STEM word
 - Antenatal – before birth
 - Postnatal – after birth



11

Understanding Word Parts
PREFIX

- Divided into 4 main groups
 - Timing/Speed - Post
 - Direction/Position - Sub
 - Size and Number - Poly
 - Negatives - Dis



12

Which word part?

13

The Human Body

20

The Human Skeleton

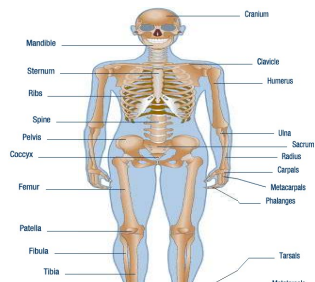
Stem words

Oste – Bone

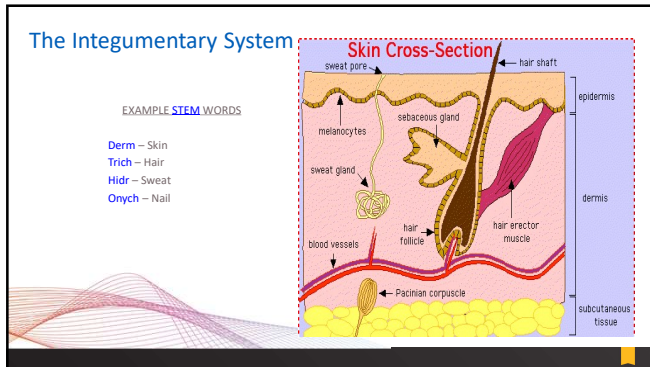
Arthr – Joint

My – Muscle

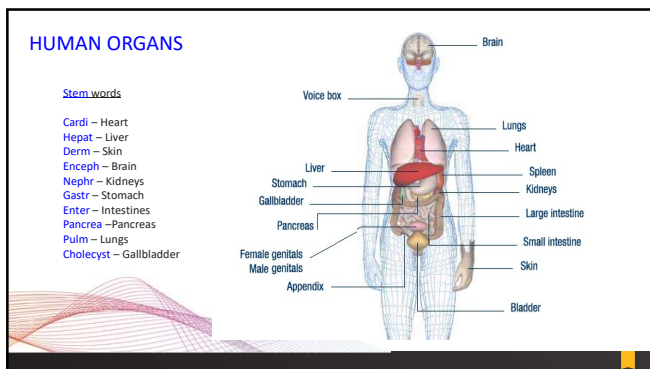
= Fracture



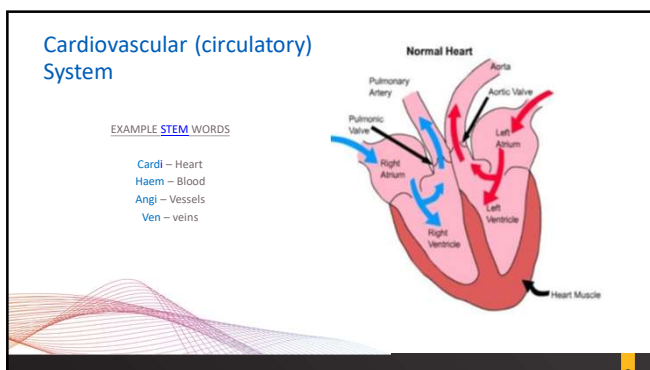
21



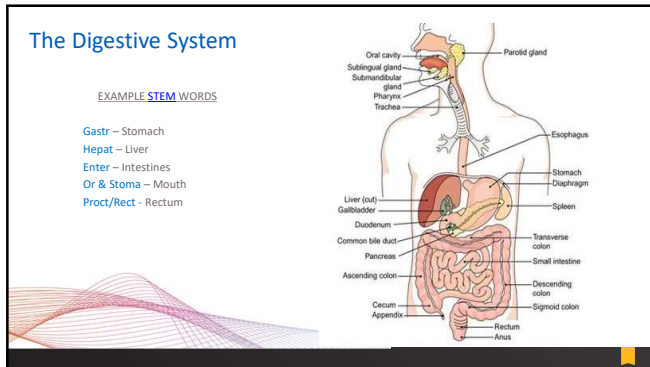
22



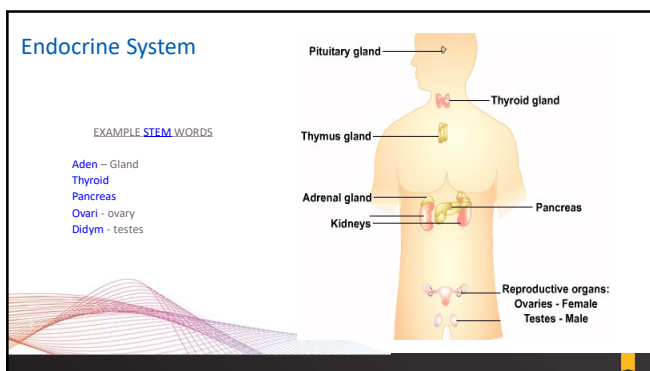
23



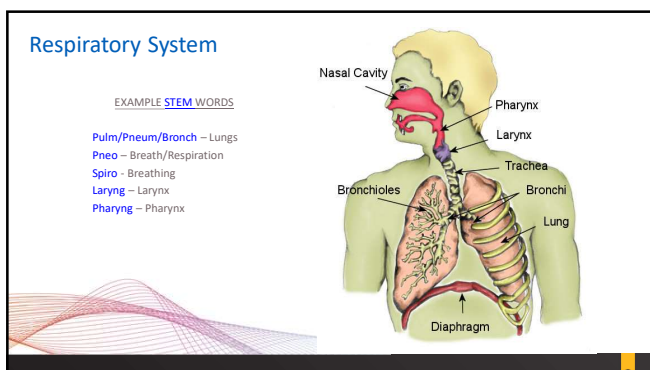
24



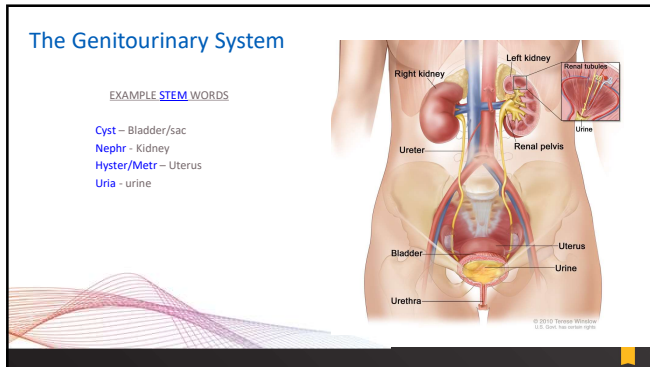
25



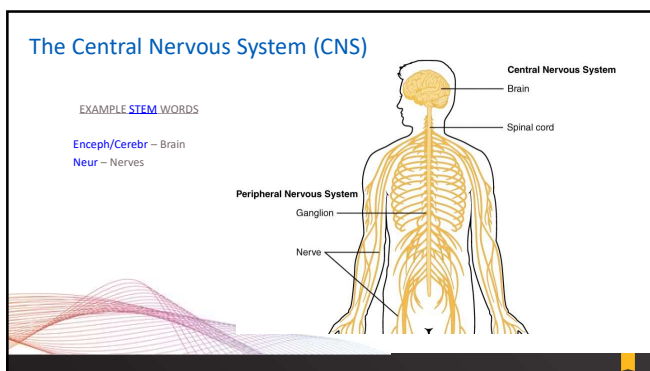
26



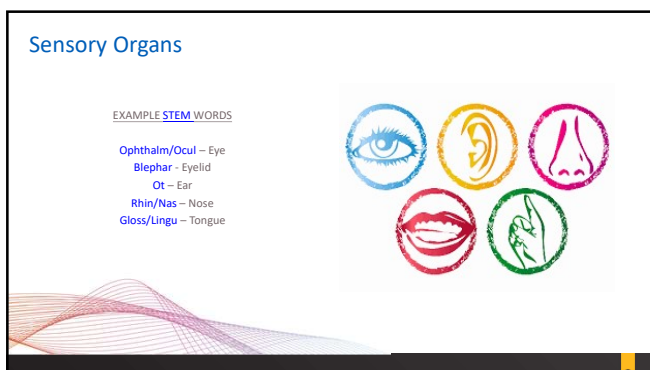
27



28



29



30

Word Break Down

31

Word Meanings

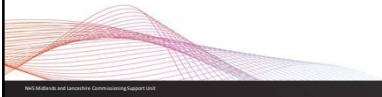
42

CYT	Cavity	Cell	Bladder	Liver
NAS(O)	Mouth	Nostril	Nose	Chin
ITIS	Inflammation	Condition of	Disease of	Discharge from
OMA	Internal	Drooping	Growth	Opening into
DYS	Apart	Painful	Through	Twice
NEO	New	Child	Baby	Old

43

Nearly there....

- Final challenge – Bonus points for the longest *correct* medical terminology Word



© NHS Medicines and Healthcare Products Regulatory Agency 2021

44

Hints and Tips

Websites

- Patient.co.uk
- Mondofacto.com
- If in doubt, always as a clinician
- Never guess the diagnosis
- Always code what is written in the letter

Thank you for listening



© NHS Medicines and Healthcare Products Regulatory Agency 2021

48

DQ Team contact details:



ALL requests for support or query resolution should be logged either via the MLCSU IT Service Desk via email MLCSU.servicedesk@nhs.net or ring **0300 555 0212**.



You can also now log and track IT Service Requests via the Self-Service Portal at: <https://sunrise-saas.com/mlcsu/SContacts/>



Remember to add: **FAO Data Quality Lancashire, Warrington & Wirral** in the subject line

© NHS Medicines and Healthcare Products Regulatory Agency 2021

49
